

ProHeat™ 35

Rolling Induction System

Induction Heating System 

Quick Specs

Applications

Process piping
Refinery
Petrochemical
Power piping
Pressure vessels

Maximum Preheat Temperature

600°F (315°C)

Input Power

460–575 V, 3-phase, 60 Hz
400–460 V, 3-phase, 50/60 Hz

Input Amperes at Rated Output

400 V: 60 amps
460 V: 50 amps
575 V: 40 amps

Rated Output

One Rolling Inductor: 20 kW at 100% duty cycle
Two Rolling Inductors: 35 kW at 100% duty cycle

Power Source Dimensions

H: 27.5 in. (699 mm)
W: 21.75 in. (552 mm)
D: 36.75 in. (933 mm)

Power Source Weight

Net: 227 lb. (103 kg) Ship: 265 lb. (120 kg)

Powering a heating revolution – for preheat of moving parts up to 600° Fahrenheit (315°C)

The ProHeat 35 Rolling Induction System is a simple and cost-effective heating solution which delivers fast and consistent heat for pipe fabrication shops that weld pipe spools for the refinery, petrochemical, power and HVAC industries.

New!

Specially designed for heating moving parts



Rolling Inductor shown with optional Mounting Arm (#301 119), Travel Detect System (#301 183) and Infrared Temperature Sensor (#301 149)

Optimal consistency and quality

- The Rolling Induction System eliminates the inconsistencies and quality issues associated with open-flame-torch heating methods
- Temperature measurement allows operators to set and achieve targeted preheat temperatures easily with limited button pushing
- The travel detect system prevents hot spots by controlling output based on travel speeds and turning output off if the part is not moving

Improved safety

- Eliminates open flames reducing burn as well as fumes and explosive gas hazards
- Direct heat transfer results in cooler shop environment that reduces operator fatigue and improves work conditions



ProHeat 35 power source shown with optional Heavy-Duty Induction Cooler (#951 142) and Running Gear (#195 436)

Maximum productivity

- Quick time to temperature increases production efficiencies while reducing consumable costs and labor expenses
- Heating while rolling the pipe assembly allows for continuous fabrication
- Compact and portable to configure around various pipe sizes throughout the fabrication shop

TRUE BLUE
WARRANTY



Miller Electric Mfg. Co.
An ITW Welding Company
1635 West Spencer Street
P.O. Box 1079
Appleton, WI 54912-1079 USA

Equipment Sales US and Canada
Phone: 866-931-9730
FAX: 800-637-2315
International Phone: 920-735-4554
International FAX: 920-735-4125

MillerWelds.com



ProHeat™ 35 Rolling Induction System

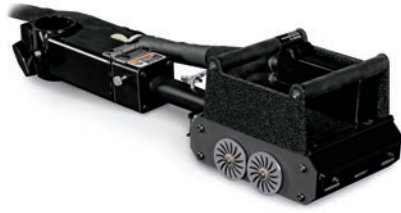
ProHeat 35

#907 271 460–575 V

#907 690 400–460 V, CE

The ProHeat 35 induction power source is equipped with a built-in temperature controller allowing for manual or temperature-based programming with an easy-to-learn operator interface. At more than 90 percent efficiency, the ProHeat 35 power source transfers more energy to the part, reducing operating costs over different heating methods. One ProHeat 35 power source can run a single or double Rolling Inductor setup.

Note: Primary input cable and strain relief not included.



ProHeat Rolling Inductor (shown with mounting arm)

#301 117 30-foot power cable

#301 263 60-foot power cable

Liquid-cooled induction head for use with ProHeat 35, includes thermocouple extension cable and cable cover. The optional mounting arm allows the Rolling Inductor to ride on the top or side of the pipe.



Running Gear #195 436

The running gear adds to the portability of the system.

The four 5-inch swivel casters with brakes mount to the bottom of the power source and cooler.



IR Sensor Connection Box #301 182

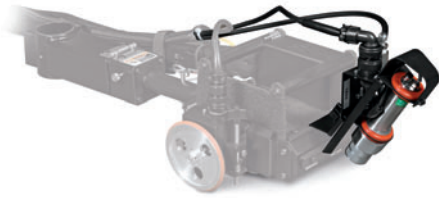
Required for connecting the infrared temperature sensor to the ProHeat 35. The connection box allows for two IR sensors to be connected to one ProHeat. Includes air regulator and filters.

Heavy-Duty Induction Cooler #951 142

Heavy-Duty Induction Cooler, CE #301 298

The heavy-duty induction cooler is designed with an efficient fin-and-tube heat exchanger, 2.5-gallon rust-proof polyethylene tank, high-pressure pump and blower to yield a high cooling capacity. When using two Rolling Inductors on one system it is recommended to add the external cooler heat exchanger, see Additional Accessories section.

ProHeat™ 35 Rolling Induction System (Continued)



Infrared Temperature Sensor #301 149
Eliminate the need for constant manual monitoring. The infrared temperature sensor can read the temperature of a moving part. Set the desired preheat temperature and the system will quickly heat to that temperature and hold it. The sensor can read from 212–750°Fahrenheit (100–400°C). Requires connection box #301 182.



Travel Detect System #301 183
Avoid overheating—heating rates automatically adjust to varying travel speeds, and when no movement is detected the travel detect system turns off the output preventing damage to the workpiece and Rolling Inductor. The travel detect system can also be used for setting different heating rates based on workpiece speed of travel. Includes all cabling and mounting hardware.

Additional Accessories



External Cooler Heat Exchanger #300 993
Increases the cooling capacity of the heavy-duty induction cooler. It is recommended when powering two Rolling Inductors on one ProHeat 35 power source.



Under Pipe Stand #301 258
Small lightweight adjustable stand for operating the Rolling Inductor on the bottom side of the pipe, allowing for greater access to the weld joint. The stand holds the Rolling Inductor in contact with the pipe regardless of direction of travel.



RPBS-14 Remote On/Off Switch #300 666
Remotely start and stop the heating process with this wired push button remote.



RHC-14 Remote Hand Control
#242 211 020 20 ft. (6 m)
#242 211 100 100 ft. (30.5 m)
Remotely adjust the heat output of the system as well as start and stop the heating process.

Specifications (Subject to change without notice.)

ProHeat 35 Power Source

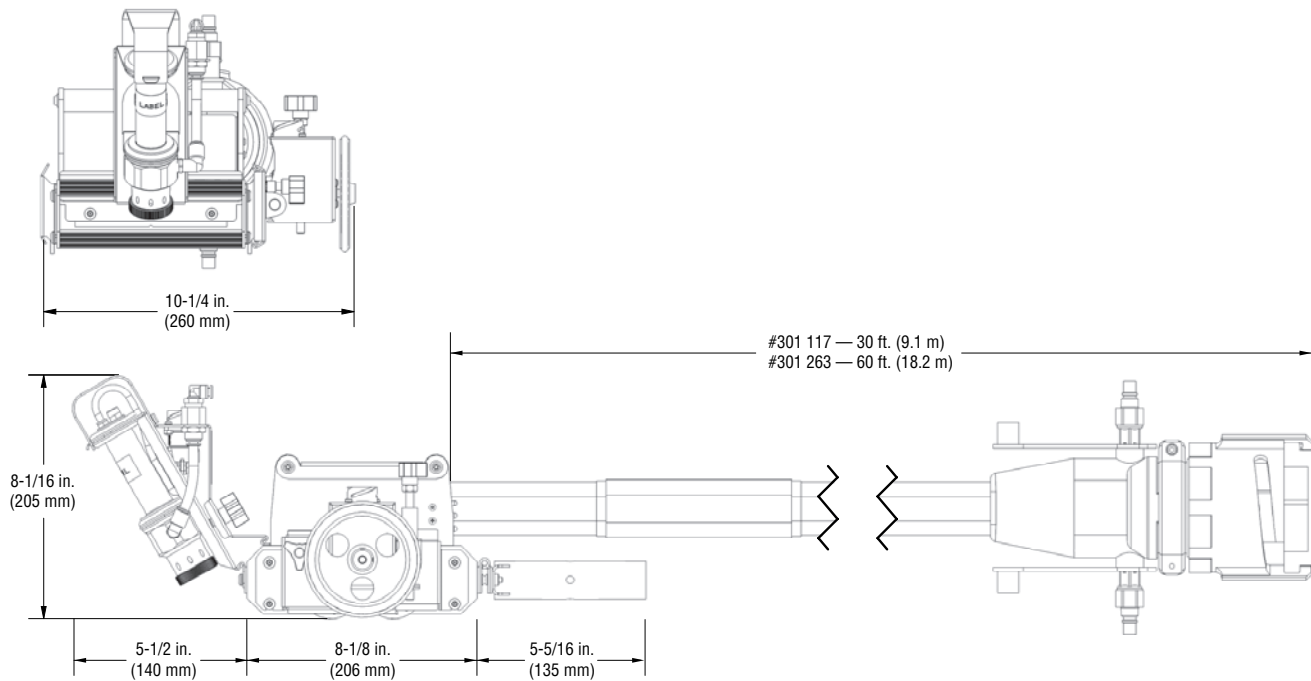
| Input Power | Ambient Temperature Range | | Rated Output | Input Amperes at Rated Output | KVA/KW at Rated Output | Dimensions | Weight |
|-------------------------------------|-------------------------------|-----------------------------|-----------------------------|-------------------------------|------------------------|--|---|
| | Storage | Usage | | | | | |
| 460–575 V, 3-phase, 60 Hz | -40 to 131°F (-40 to 55°C) | 4 to 131°F (-15 to 55°C) | 35 kW at 100% duty cycle | 50 A, 460 V 40 A, 575 V | 39/37 | H: 27.5 in. (699 mm) W: 21.75 in. (552 mm) D: 36.75 in. (933 mm) | Net: 227 lb. (103 kg) Ship: 265 lb. (120 kg) |
| 400–460 V, 3-phase, 50/60 Hz, CE | | 60 A, 400 V 50 A, 460 V | | | | | |

 Certified by Canadian Standards Association to both the Canadian and U.S. Standards.

ProHeat Rolling Inductor

| Rated Output | Ambient Temperature Range | | Maximum Part Preheat Temperature | Required Cooler | Dimensions | Shipping Weight |
|--------------------------------|-------------------------------|----------------------------|----------------------------------|--|--|------------------|
| | Storage | Usage | | | | |
| 300 amps at 100% duty cycle | -40 to 180°F (-40 to 82°C) | 32 to 140°F (0 to 60°C) | 600°F (315°C) | Heavy-Duty Induction Cooler (#951 142) | H: 5.25 in. (133 mm) W: 6.6 in. (168 mm) D: 8 in. (203 mm) | 40 lb. (18.1 kg) |

Rolling Inductor Dimensions



Ordering Information

| Equipment and Options | Stock No. | Description | Qty. | Price |
|-------------------------------------|--|---|------|-------|
| ProHeat™ 35 Power Source | #907 271 | 460–575 V, 3-phase, 60 Hz, 35 kW power source. Can run two Rolling Inductors | | |
| Heavy-Duty Induction Cooler | #951 142 | 460–575 V. Attaches to power source. Includes one case of coolant #043 810 and coolant quick-connect hose assembly #227 601 | | |
| ProHeat™ 35 Power Source, CE | #907 690 | 400–460 V, 3-phase, 50/60 Hz, 35 kW power source, CE . Can run two Rolling Inductors | | |
| Heavy-Duty Induction Cooler, CE | #301 298 | 400–460 V. Attaches to power source. Includes quick-connect hose assembly #227 601 | | |
| External Cooler Heat Exchanger | #300 933 | Increases the cooling capacity of the cooler, recommended when running two Rolling Inductors on one power source | | |
| Coolant | #043 810 | One gallon of low-conductivity coolant. Must be ordered in multiples of four (one case) | | |
| Running Gear | #195 436 | Attaches to bottom of power source or cooler | | |
| Rolling Inductor | #301 117 | 30 ft. liquid-cooled induction head. Includes thermocouple extension cable and cable cover | | |
| | #301 263 | 60 ft. liquid-cooled induction head. Includes thermocouple extension cable and cable cover | | |
| Infrared Temperature Sensor | #301 149 | Attaches to the Rolling Inductor. Measures the temperature of moving parts from 212–750° F (100–400° C). Requires connection box #301 182 | | |
| Infrared Sensor Connection Box | #301 182 | Attaches to the power source. Allows for the connection of two Infrared Temperature Sensors | | |
| Travel Detect System | #301 183 | Attaches to the Rolling Inductor. Comes with cabling and mounting hardware | | |
| Mounting Arm | #301 119 | Attaches to the Rolling Inductor for mounting to pipe stand | | |
| Under Pipe Stand | #301 258 | Stand for mounting the Rolling Inductor on the bottom of the pipe | | |
| Accessories | | | | |
| RPBS-14 Remote On/Off Switch | #300 666 | 26 ft. wired remote on/off for power source | | |
| RHC-14 Remote Hand Control | #242 211 020 #242 211 100 | 20 ft. wired remote for heat and on/off for power source 100 ft. wired remote for heat and on/off for power source | | |

Date:

Total Quoted Price:

Distributed by:

